

ALL YOU NEED FOR BUILDING CREATIVE & PROFESSIONAL



Ruddhi Buildcon Pvt. Ltd®
ENGINEERS & CONTRACTORS.

AN ISO 9001-2008 CERTIFIED COMPANY

204, Kharbanda Park, Near Hotel Dwarka, Pune Road, Nasik 422011.

Phone: 0253 2509522, 9225106891, 9225106900

Web - www.ruddhi.com, www.industrialcontractors.co.in

Email: admit@ruddhi.com



ISO 9001:2008
Rege.No.RQ91/6225



ABOUT US

Welcome to Ruddhi Buildcon!

Ruddhi Buildcon Pvt. Ltd. an ISO 9001-2008 certified company, established in year 2004 is one of leading and fast growing civil engineering company based in Nashik, Maharashtra. We undertake all type of constructions such as factory buildings / sheds, commercial and residential buildings, roads, interior works, and housing projects on item rate contracts or on turnkey basis. The company is well endowed with a group of highly skilled, extremely qualified, well experienced, motivated, committed and trained personnel. They have proper knowledge about their area of specialization and are updated by the advance technology & changing market trends.

We have successfully completed many projects for well known and renowned customers under leading architects and consultants. With advanced & updated construction techniques we always keep more emphasis on Quality, Service, In-time completion, Safety & Economy.

By satisfying the customers with consistent quality and service we achieved a success in developing long term relationships with our customers.

We are proud to inform that we have been rewarded with high ratings every year from crisil since 2012.



Key Person



NAME

SHRIKANT PRABHAKAR KAPSE.

DATE OF BIRTH

15TH AUGUST 1968

QUALIFICATION

DCE in May 1987 from Govt. Polytechnic, Nashik

B.E. Civil in May 1991 from Bharati Vidyapeeth's College of Engg., Pune.

WORK EXPERIENCE

From 1991 to 1994 worked in reputed construction companies and handled various Prestigious mega projects independently.

In Dec 1994 Established proprietary firm `REGAL CONSULTANT' & served the customers with value and quality oriented constructional services such as Survey, Planning, Designing, Construction, Maintenance and Water proofing.

In June 1998 Established Sister Concern `Shireen Enterprises' and served the customers with trading and application of specialty construction chemicals.

To cater the market needs and great support from valued customers **in August 2004** established a new pvt.ltd firm **RUDDHI BUILDCON PVT. LTD.** Today the major trust is in Industrial Civil & structural steel Constructions.



Our Vision :

To be the most reliable & reputed Construction company in the territory

Our Mission :

We Strive for...

- To be the first choice for clients looking for quality, service and value.
- To maintain the highest level of confidence of professionalism, integrity, honesty and fairness in our relationship with our suppliers, subcontractors, professional associates and customers
- To Provide our employees an honest & helpful working environment so that every employee individually and collectively will dedicate themselves and honour our customers with exceptional workmanship, extraordinary service and professional integrity
- To achieve the longevity of our company through getting repeated and referral business from our customers by satisfying them in all areas such as safety, timeliness, attention and professional attitude



Ruddhi Buildcon Pvt. Ltd[®]
ENGINEERS & CONTRACTORS.



Our Selected Satisfied Industrial Clients

- Jyoti Ceramic Industries Satpur, Nasik
- Graphite India Ltd Satpur, Nasik
- Graphite India Ltd. Ambad, Nasik
- Kishor Polyurehines Pvt. Ltd. Malegaon (sinner), Nasik
- Matchline Clothing Co. Malegaon (sinner), Nasik
- Bafna Motors (m) Pvt. Ltd. Nerul, Navi Mumbai
- Bafna Motors (r) Pvt. Ltd. Mirzole, Ratnagiri
- Veneous Wrappers Pvt. Ltd. Konkan, Goa
- Nasik Autotech Pvt. Ltd. Ambad, Nasik
- Divine Industries Pvt. Ltd. Malegaon (sinner), Nasik
- Mahindra And Mahindra Ltd. Plant I, Satpur, Nasik
- Graphite India Ltd. Gonde, Nasik
- Kentintrol Pvt. Ltd. Ambad, Nasik
- National Heavy Engineering Ltd. Talegaon-dabhade, Pune
- Unique Industrial Handlers. Gonde Dumala, Igatpuri, Nasik.
- Koso India Pvt. Ltd. Ambad, Nashik.
- Mahindra And Mahindra Ltd. Kandivali, Mumbai.
- Jindal Saw Ltd, Malegaon, Sinner, Nasik.
- Ceat Tyres Ltd, Satpur, Nashik
- Mahindra And Mahindra Ltd. Zahirabad, Andhra Pradesh
- Siemens Ltd, Ambad, Nashik
- Mahindra And Mahindra Ltd. Plant II, Satpur, Nasik
- Mahindra & Mahindra Development Center, Nashik
- Mahindra & Mahindra Ltd, Igatpuri, Nashik.
- Innovatus automation Ltd. Nashik
- Ashok Astoria Gangapur Road, Nashik and many more.....





What we do?

- Construction of Industrial, Commercial & Residential Buildings.
- Construction of Structural Steel Buildings / Sheds.
- Complete Civil and Related Infrastructure Work.
- Interior Works
- Building With PEB Technique.
- WBM, Concrete & Asphalt Road.
- Structural Erections.
- Specialty Steel Structures For specific Utility Such as Supporting Structures for Machineries, Walk Ways, Cat Walks, Staircases, Gantry Girders, Monorails, Conveyors etc.
- Demolition of RCC Buildings.
- Dismantling of Steel Structures / Buildings.
- Strengthening of Structures in Distress.
- Equipment / Machinery Foundations.
- Industrial Roofs.
- Industrial Floorings.
- Development of Buildings & Lands / Real Estate Projects.
- Application of Construction Chemicals.
- Trunkey Projects.

Why Ruddhi Buildcon Pvt. Ltd.?

- Legacy of excellence.
- Both Civil and Structural steel work under one roof.
- Vast & versatile knowledge & experience in the field of Civil construction and Structural steel projects.
- In spite of severe competition maintained long term relations with prestigious clients.
- Maintained strong balance growth for past years.
- Dynamic & Innovative approaches for the project execution at fast pace.
- Project execution with standard safety practice and standard PPE's to all employees and workers.
- Highly respective in Timely delivering the projects.
- Total customer satisfaction on top most priority.





Construction Equipments & Machineries We Have

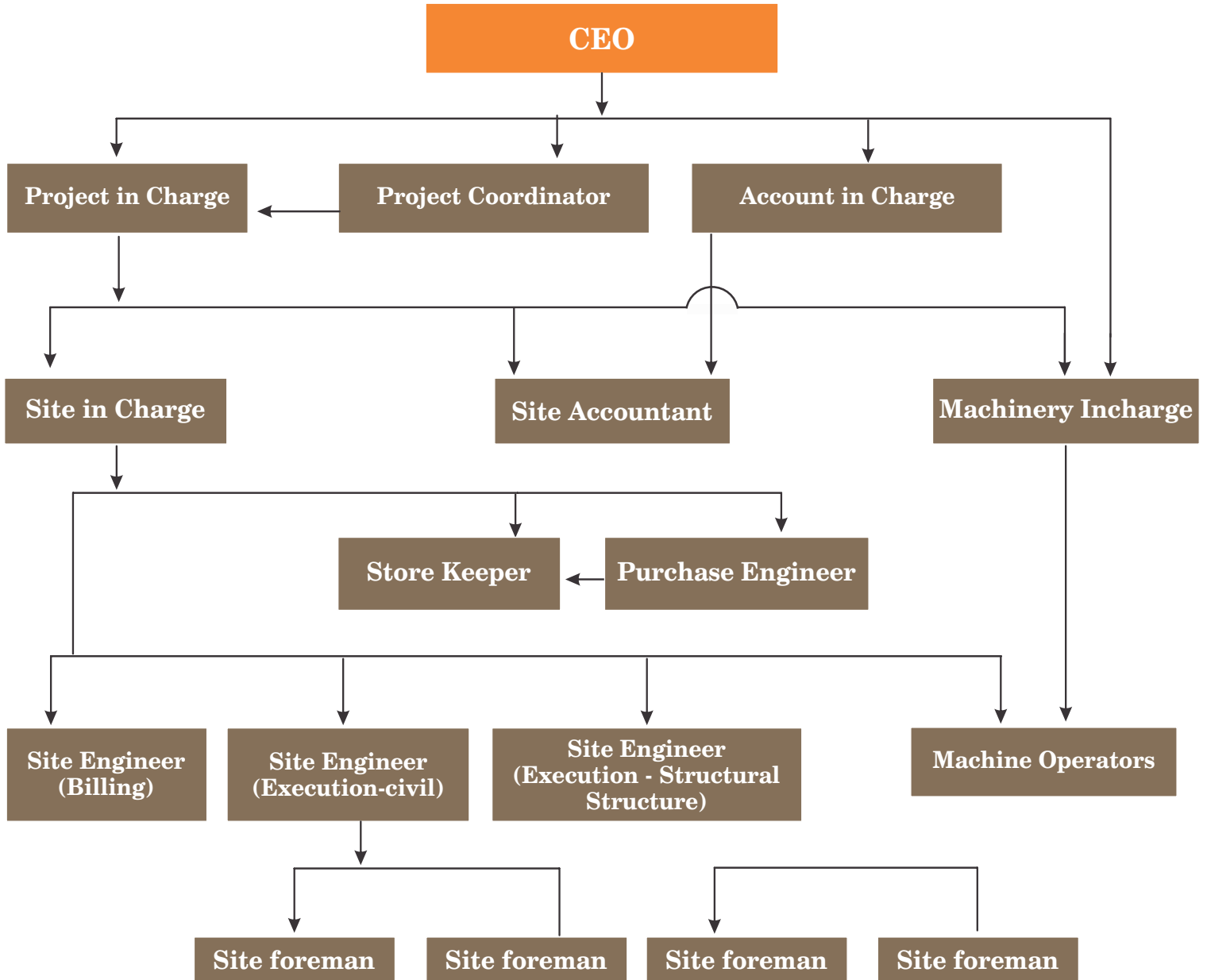
Shuttering Material Steel plates, acro spans, steel props, and H frames etc.	150.00 brass
Dumper / Hydraulic Tipper – 8.5cum capacity TATA SK 1613	02.00 No.
Terex Tx-760 backhoe loader (JCB) with rock breaker	01.00 No.
Bolero camper – Pickup Mahindra make	01.00 No.
Concrete mixer (1.0bag load, diesel operated)	03.00 No.
Concrete mixer (1/2 bag load, diesel operated)	01.00 No.
Concrete mixer (1/2 bag load, Electric operated)	01.00 No.
Weigh batcher	01.00 No.
Vibrator with 40 / 60mm needle-petrol / electrical operated	05.00 No.
Electric / Diesel operated dewatering pump – 3.0 / 5.0 Hp	05.00 No.
Hitachi / Hilti make electric operated Breaker	05.00 No.
Earth Compactor	01.00 No.
Fabrication equipments	
Welding machines	15.00 No.
Drill machines 0.5 / 1.0 Hp	05.00 No
Pug machine	04.00 No.
Cutting set	05.00 No
Winch - 7.5 / 10.0 mt capacity	12.00 No.
Derrick – 10 mt capacity – 50.0m high	04.00 No
Escort Hydra - 10 mt capacity – 10.0m boom	02.00 No.
	01.00 No
Theodolite	02.00 no.
Dumpy level	04.00 no.
All Quality testing equipments such as slump cone, IS sieves, universal testing machine etc.	1 Set

And many more





Our Organisation Chart





● Unique Industrial Handlers, Gonde, Nashik.

● Graphite India Ltd.Ambad,Nashik



● Kishor Polyurethines Pvt.Ltd.Sinner,Nashik



● Mahindra & Mahindra Ltd. Satpur, Nashik.



● Mahindra & Mahindra Ltd. Zahirabad



● Graphite India Ltd. Satpur, Nashik





- Bungalow Jaibhavani Road, Nashik.



- Bungalow Ashoka Road, Nashik



- Tulip Park Indira Nagar Annex, Nashik.



- Tapovan Vihar, Tapovan Road, Nashik.



- Ruddhi Enclave Pathardi Road , Nashik.





● Interior work-club house,Ashok Astoria,Ganapur,Nashik



Ruddhi Buildcon Pvt. Ltd
ENGINEERS & CONTRACTORS.



Certificates & Accreditations



MAHINDRA & MAHINDRA LTD.

Appreciation

To,
M/s. Ruddhi Buildcon Pvt. Ltd., Nashik

We appreciate your good work of constructing semi permanent sheds for our initiative of "Zero Tarpaulin Sheds".

You have executed the work without any untoward incidence and without affecting our normal production work.

Looking forward to your continued contribution in our Rise journey towards excellence.

Keep up the good work!

Place : Nashik
Date : 15/01/2014

(H. D. Aher)
VP-Mfg Operations
(Nashik & Igatpuri)

Mahindra
Elevate



CRISIL SME Rating

Ruddhi Buildcon Private Limited, Maharashtra
has been awarded an CRISIL Rating of



on February 10, 2017.

This rating indicates 'High' level of creditworthiness, adjudged in relation to other SMEs.
This rating is valid till February 09, 2018.

Manish Jaiswal
Business Head – SME Ratings



Ruddhi Buildcon Pvt. Ltd
ENGINEERS & CONTRACTORS.